



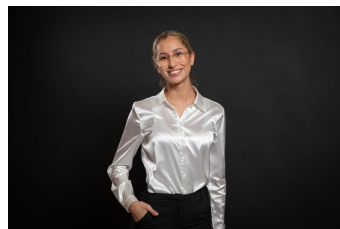
774/83-93 Dalmeny Avenue Rosebery NSW

2  2  1 

This extra large two bedroom apartment is located in the sought after Kimberley estate with full security, access to swimming pool facilities, gym, spas & sauna's, squash courts and cafes.

- Open plan living area and a balcony with city and district views
- As new paint & carpet throughout
- Modern kitchen with stainless steel appliances and gas cooking
- Main bedroom with ensuite
- Internal laundry
- Pool and gym facility within the complex
- Security car space

View : <https://www.rre.com.au/7176132>



Andrea Kyriakou
02 9667 2868