

### 7/1 Myrtle Street Botany NSW

3  2  3 

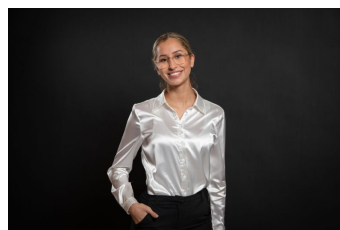
Perfectly located opposite Botany Aquatic Centre and Booralee Park, this extra large tri-level townhouse offers the best in lifestyle and convenience. Perfect for the family and situated in a boutique complex, the property is well presented throughout. The property is enhanced by a free-flowing entertainers floorplan.

#### Features Include:

- \* Huge living spaces, spanning over 4 levels in total, including basement garage and entire top floor master suite
- \* Three large bedrooms all with built-ins
- \* Separate family room
- \* Separate and spacious living and dining areas
- \* Ducted air-conditioning throughout
- \* Large main and en-suite, both with bath tubs as well as

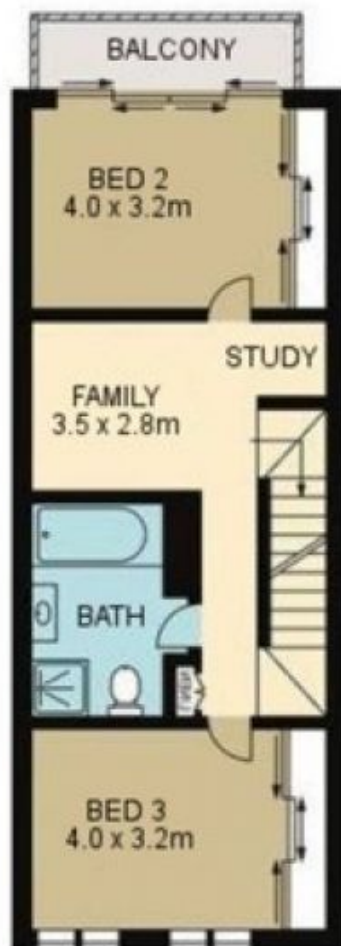
**Type** : Townhouse

**View** : <https://www.rre.com.au/8088537>

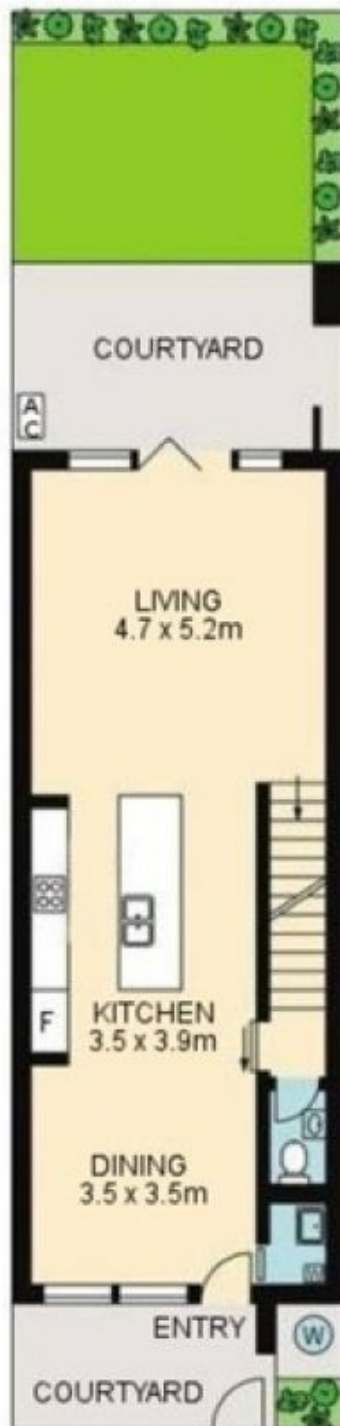


**Andrea Kyriakou**  
02 9667 2868

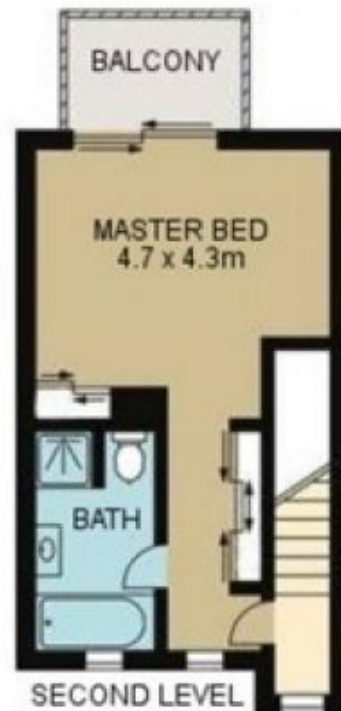
[For full version visit the website](https://www.rre.com.au)



FIRST LEVEL



GROUND LEVEL



SECOND LEVEL



BASEMENT LEVEL



**7/1 MYRTLE STREET**

**BOTANY**

DISCLAIMER: ARTUM PLANS SHOWN ARE FOR PRESENTATION PURPOSES & ARE NOT PART OF ANY LEGAL DOCUMENT. ALL MEASUREMENTS & FIGURES ARE APPROXIMATE. FLOOR PLANS, PHOTOGRAPHY & GRAPHIC DESIGN BY [ARTUMPROPERTYMARKETING.COM.AU](http://ARTUMPROPERTYMARKETING.COM.AU)