



85 Tramway Street Rosebery NSW

3  1  3 

This beautifully updated three-bedroom property offers everything a modern family needs, nestled in a prime location close to all the essentials. Close to amenities, dining at The Cannery, a bus stop less than a minutes walk away, a short stroll from both Turrawul park and Lestrange park. Don't miss the opportunity to make this home yours.

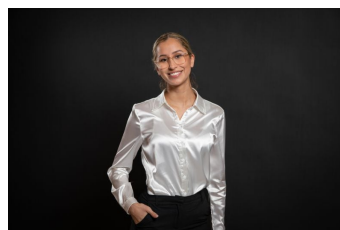
***This property is available inspect via private appointment. Send through an enquiry below or give me a call and we can scedule an inspection!

Features include:

- * Three spacious bedrooms - all with mirrored built-in wardrobes
- * Updated bathroom with seperate bath and shower

Type : House

View : <https://www.rre.com.au/8100980>



Andrea Kyriakou
02 9667 2868

[For full version visit the website](https://www.rre.com.au)