



5/15 Templeman Crescent Hillsdale NSW

2  1  1 

On offer is this well presented 2 bedroom top floor unit on a quiet street in Hillsdale. It is ideally located close to Westfield Eastgardens, parks, schools and transport.

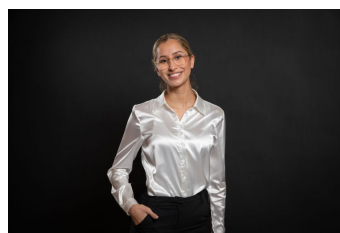
Features include:

- * Floorboards throughout
- * 2 double bedrooms, both with mirrored built-in wardrobes
- * Spacious living area with sunny adjoining balcony
- * Updated Kitchen with new cabinetry
- * Well presented bathroom
- * Internal laundry facilities
- * Car space

Available date: 05/11/2024
Length of Lease: 12-months

[For full version visit the website](https://www.rre.com.au/8151932)

Type : Apartment
Price : \$570 Per Week
View : <https://www.rre.com.au/8151932>



Andrea Kyriakou
02 9667 2868